

BERTHON

SUPERYACHT TENDER SUPPORT

"I can attest to Berthon's professionalism and service in the 25 years that I've known the company. I would have no hesitation in recommending Berthon as a great facility for the service, refit and support of superyacht tenders."

**Alastair Tait,
Captain, Lady Christine**



CAPABILITY STATEMENT

BERTHON

Berthon Boat Co Ltd, The Shipyard, Bath Road, Lymington, Hampshire, SO41 3YL, United Kingdom

Tel: 44 (0) 1590 647 426

refits@berthon.co.uk

www.berthon.co.uk



ISO 9001 Certified



PROUD MEMBER OF
BRITISH MARINE
LEADING THE INDUSTRY

CAPABILITY STATEMENT

Berthon Boatyard

- 
- 1 PROJECT OFFICES
 - 2 WORKSHOPS & AMENITIES
 - 3 M-SHED
 - 4 WEST SOLENT SHED
 - 5 PAINT SHEDS
 - 6 WORKS PONTOON
 - 7 HOIST DOCK
 - 8 75T HOIST
 - 9 FIXED 20T CRANE
 - 120T BOAT MOVER

Berthon repairs, refits and refurbishes superyacht tenders. Offering a global pick up and return service, Berthon has worked on everything from RIBs and crew tenders, to limos and launches.

Trading continuously since 1877, Berthon's boatyard forms part of the 40,468 sq/m site which includes engineering workshops, spotlessly clean undercover heated sheds, paint booths and boat moving equipment. With direct access to the Solent and English Channel, sea trials can be undertaken in both sheltered or open waters at all states of tide. Boats can be shipped overseas direct from nearby Southampton Water.

"I would like to thank you on behalf of my colleagues and M/Y RAHAL for the work Berthon has done on our tender. You have done a great job on the hull, paintwork and sponson tube."

Jean du Prez, 2nd Officer, M/Y RAHAL



PASCOE TENDER REFIT FOR M/Y RAHAL



REFIT COMPLETED



DECK AND CONSOLE WORK

BERTHON

Berthon Boat Co Ltd, The Shipyard, Bath Road, Lymington, Hampshire, SO41 3YL, United Kingdom
Tel: 44 (0) 1590 647 426 refits@berthon.co.uk www.berthon.co.uk



ISO 9001 Certified



PROUD MEMBER OF
BRITISH MARINE
LEADING THE INDUSTRY

CAPABILITY STATEMENT

Management and Facilities

Project management & administration

Berthon's project offices overlook the main floor of M-Shed. This means our managers are linked to the refit projects at all times, whilst allowing workers direct access to managers for decision making. Berthon maintains owner/operator office space that allow clients access to on-site office facilities, should they require a presence whilst projects are ongoing. The accounts and administration offices are also located within the M-shed building.

Berthon's M-Shed (2,578 sq/m) West Solent Shed (1,154 sq/m)

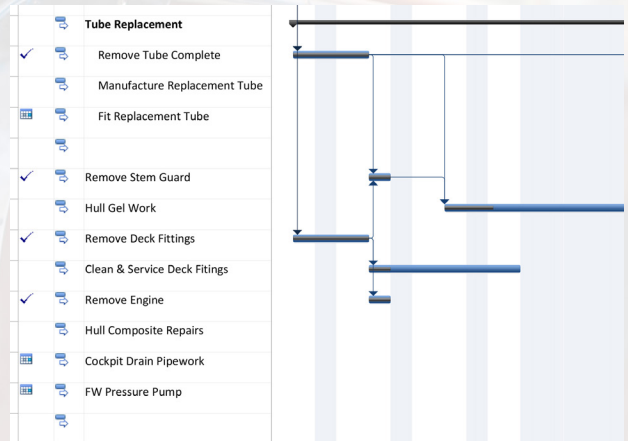
Both M-Shed and the West Solent shed are fitted with mezzanine floors providing easy and safe access to boats. Berthon's separate workshops for shipwrights, engineers, electricians and riggers are adjacent to projects and production lines; all project managers and skilled employees have DECT phones for effective and timely communication.

Paint Shed (1,149 sq/m)

Berthon has a large, modern paint facility. The main glossing booth is flanked by two similar sized preparation booths. Adjacent to these are workshops that contain spray areas used for smaller components such as cabinets and yacht furniture. The paint team is dedicated to reproducing superyacht standard boat painting. They are able to control variables such as air temperatures, hull temperature and air humidity.

"I have no hesitation in recommending Berthon Boat Company for small jobs rewiring an 8m rib through to a paint job and significant shipwright jobs on an 80 foot racing cruising yacht – we have done this and everything in between over the years."

*Chris Sherlock,
Captain, S/Y Leopard 3*



PROJECT PLANNING FOR TENDER REFIT



BERTHON'S M-SHED



GLOSSING BOOTH WITH HUNTON 43' TENDER



M-SHED (LEFT) - PAINT SHED (RIGHT)

BERTHON

Berthon Boat Co Ltd, The Shipyard, Bath Road, Lymington, Hampshire, SO41 3YL, United Kingdom
Tel: 44 (0) 1590 647 426 refits@berthon.co.uk www.berthon.co.uk



ISO 9001 Certified



PROUD MEMBER OF
BRITISH MARINE
LEADING THE INDUSTRY

CAPABILITY STATEMENT



WOODWORKING AREA

Shipwrighting workshop

The shipwright's workshop is located on the 1st floor adjacent to M-Shed. It provides the full range of facilities and machinery for boat maintenance, refit and repair including woodworking and GRP lamination. In addition, there are a range of air-powered and electric hand tools available.

Berthon employs shipwrights who carry out the full range of boat construction, general fit out, composite laminating and joinery work.

Marine engineering workshop

The engineering workshop is located on the ground floor adjacent to M-Shed. It contains a comprehensive range of machinery used for metalwork, machining, engine stripping and equipment repair. The machine shop equipment includes a lathe, milling machine, drilling machines, band saws, cross-cut saw, planer, grinders and polishers. Metalworking facilities include a plasma cutter, plate folder, plate roller, and hydraulic tube bender. Welding facilities include MIG and TIG for aluminium and stainless steel, and arc welding for steel. In addition there is the full range of air-powered and electric hand tools available.

Berthon employs marine engineers carrying out mechanical fit outs, pipe fitting and plumbing, engine servicing and repairs and fabrication and welding on boats in build or in refit or repair.



MARINE ENGINEERING WORKSHOP

Electrical workshop

The electrical workshop is located on the ground floor adjacent to M-Shed. Electrician's equipment and tools include insulation resistance and continuity testers, multi-meters, socket testers, battery testers, battery chargers, battery drop testers and soldering equipment. They also have access to an engraving machine and label printer. In addition, the workshop is equipped with a pillar drill, rivet gun, crimpers and other tools.

Berthon employs skilled and experienced marine electricians qualified in 12/24V DC and 240V AC electrical systems. Work ranges from complete installations, re-wires, modifications and repairs to boat's electrical circuits, to the installation of electronic navigation and communication equipment.



ELECTRICAL WORKSHOP



COMPOSITE & GLASS CUTTING

"It is the personal touches that make the difference and Berthon provide those with abundance. I would not hesitate to recommend them as the premier shipyard in the UK."

Mark Stevens, Captain, S/Y Red Dragon

BERTHON

Berthon Boat Co Ltd, The Shipyard, Bath Road, Lymington, Hampshire, SO41 3YL, United Kingdom
Tel: 44 (0) 1590 647 426 refits@berthon.co.uk www.berthon.co.uk



ISO 9001 Certified



PROUD MEMBER OF
BRITISH MARINE
LEADING THE INDUSTRY

CAPABILITY STATEMENT

Facilities and Services

Logistics - pickup, tender transport & delivery

Berthon are able to pick up and return tenders from anywhere in the world, underpinned by excellent logistics. The rapid and careful transportation of tenders to Berthon enables quick turnaround times. In addition we offer boat transportation throughout Europe via our experienced road transportation partners. Where applicable, we can also offer a professional delivery service for our private clients undertaken by our qualified skippers and crew.



TENDER TRANSPORTATION

Sea trials

Berthon's in-house skippers and crew are qualified to carry out sea trials of the tenders we've worked on. It's an integral part of the superyacht service. During sea trials, craft are fine-tuned by our marine engineers; they are then cleaned, polished and prepared for transportation. Project managers are available to clients after the return of tenders to discuss ongoing service requirements, maintenance and use of any new equipment installed.



RIVA TRITONE UNDERGOING A SEA TRIAL

In-service support – maintenance & servicing

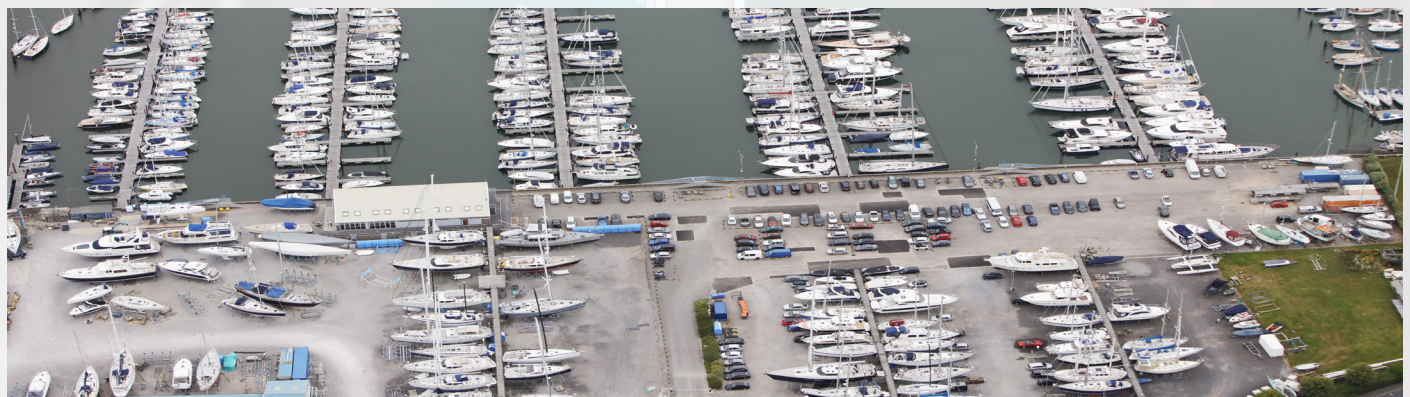
Berthon provides vital in-service maintenance support and refit services to private and business clients. This involves everything from sourcing parts, design consultancy, planned maintenance, routine servicing and repairs, to major life extension programmes where minimising downtime is a priority. Berthon have good relationships with superyacht refit shipyards enabling the latter to rely upon our superyacht tender services.



BERTHON'S EXTENSIVE STORES

Berthing & hard storage

One of the first yacht marinas to be built in the UK, Lymington Marina offers 280 deepwater, well-protected Lymington River berths for boats up to 45m (150ft) as well as secure hard standing storage for boats up to 120T. The marina offers excellent facilities for short and long term stays, including shore power, water, fuel (diesel and petrol), showers, a launderette, and ice, plus 24 hour security.



BERTHING AND HARD STORAGE

BERTHON

Berthon Boat Co Ltd, The Shipyard, Bath Road, Lymington, Hampshire, SO41 3YL, United Kingdom
Tel: 44 (0) 1590 647 426 refits@berthon.co.uk www.berthon.co.uk



ISO 9001 Certified



PROUD MEMBER OF
BRITISH MARINE
LEADING THE INDUSTRY

BERTHON

SUPERYACHT TENDER SUPPORT

Summary

Berthon offers an 'end-to-end' superyacht tender repair, refit and refurbishment service which has global reach. Aimed at busy superyacht Captains and crew, we take care of all aspects of a repair or refit project, ensuring that tender return time-lines are met and budgets are not exceeded.

First-class logistic support: Collecting the tender from anywhere in the world, transportation to Lymington, managing then completing work, returning in pristine condition to meet the superyacht anywhere.

Realistic timelines and budget planning: We discuss, then plan work with the principal client agreeing on realistic timelines with consideration for any budget constraints.

Superb marine engineering and facilities: Our marine engineers have the relevant trade skills. Berthon facilities are secure, clean and insulated. The tender support areas also contain lineside stores and tools.

A single point of contact for project management: Expertise and project planning for each contract, so that the client knows precisely how the work schedule is progressing, including weekly cost reports sent with photo updates where required.

Problem-solving and diagnostic services: We identify any issues that could create future problems, providing solutions that will keep the tender running efficiently.

Planned work implementation: We carry out planned refits and maintenance as part of any fleet servicing requirements.

Last minute pit-stops: We are normally able to accommodate last minute pit stop repairs, maintenance and refurbishments. Please contact us for availability.

"I can attest to Berthon's professionalism and service in the time that I've known the company. Their shipyard has excellent facilities that are well maintained, I know several of their project managers who have come from the yachting sector so know what we need and expect as private yachts. I have spent some time in Berthon with yachts in the past and have also kept an 8m RIB at their facility. I have personally witnessed the transformation of some of the RIBs that they have refitted and I must say the results are very impressive! I would have no hesitation in recommending Berthon as a great facility for service, refit and support of superyacht tenders."

Alastair Tait,
Super Yacht Captain, M/Y Lady Christine



AS SEEN IN...



INFORMATION DIRECT
YACHTFILE®

